

SCHEDULE "A"

PROPOSED SUBDIVISION OF LOT 98, DISTRICT LOT 55, WELLINGTON DISTRICT, PLAN 25430

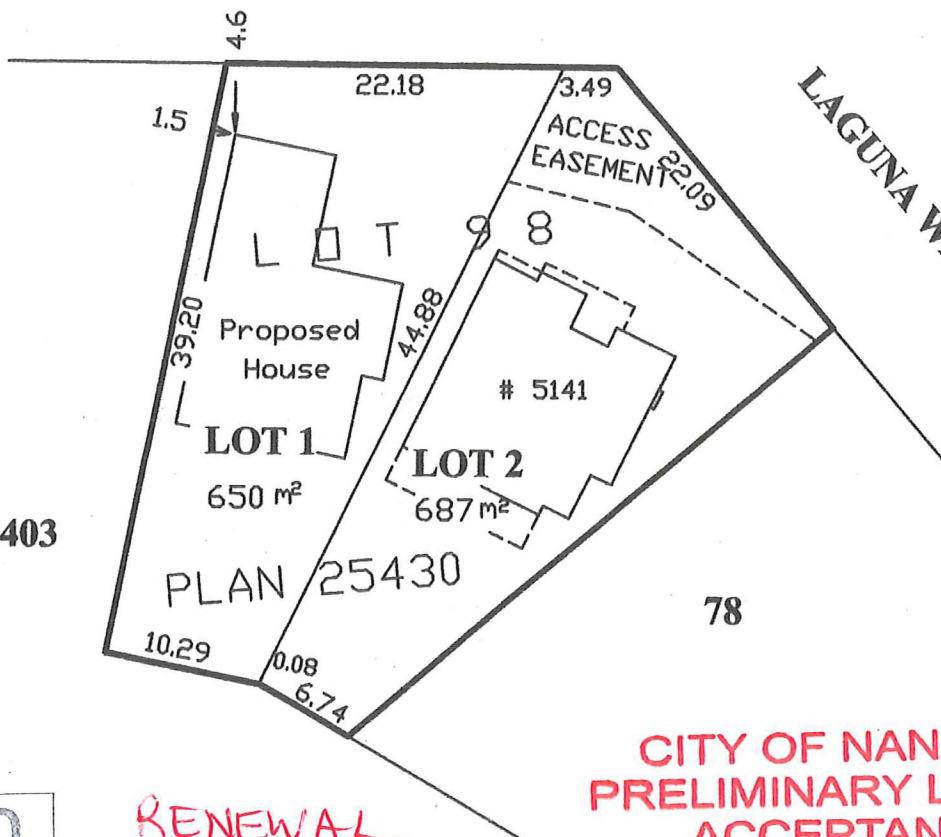
SCALE 1:500

MEASUREMENTS ARE IN METRES



UNIVERSAL PLACE

LAGUNA WAY



7
PLAN VIP53403

78

**CITY OF NANAIMO
PRELIMINARY LAYOUT
ACCEPTANCE**

**RENEWAL
CITY OF NANAIMO
PRELIMINARY LAYOUT
ACCEPTANCE**

2017-APR-18 *[Signature]*
Date Approved By
2018-APR-18
Expiry Date

2018-MAR-23 *[Signature]*
Date Approved By
2019-APR-18
Expiry Date

This 17th day of November, 2016.

[Signature]
B. C. L. S.

RECEIVED

NOV 21 2016
SUBD 1227
CITY OF NANAIMO
SUBDIVISION

T.G. Hoyt
B.C. Land Surveyor
2275 Godfrey Road
Nanaimo, B.C.
V9X 1E7
250-753-2921

FB 369/41